

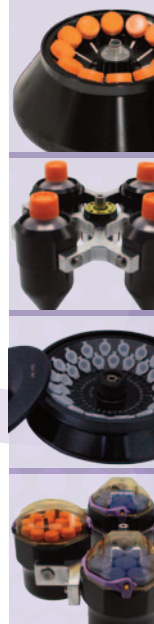
EZ QUANTUM



provides exceptional capacity in a compact design with a smart, simple interface and the flexibility to support numerous applications

The versatile Quantum Series Multifunction Bench Top Centrifuge

- UP TO 31 PRECISELY CONTROLLED ACCELERATION AND DECELERATION RATE PROGRAMMES (MODEL DEPENDENT)
- ERGONOMIC DESIGN, WITH LARGE, MULTI-COLOUR TOUCHSCREEN DISPLAY
- CLEAR RUN PARAMETERS DISPLAYED, INCLUDING ROTOR, SPEED, RCF, TIME ETC
- GLOVE-FRIENDLY TOUCHSCREEN OPERATION
- SPLASH-PROOF DISPLAY FOR ADDED PROTECTION



THISTLE
SCIENTIFIC

Research Today, Change Tomorrow





- **PERFORMANCE**

With up to 31 acceleration and deceleration rates including zero brake option (model dependent). EZEE Quantum centrifuges permit highly customised operations, ensuring samples achieve the best separation.

A frequency variable motor drive system enables the unit to operate in a stable and quiet manner. The Pre-Cool function allows set temperatures to be reached rapidly (refrigerated models only).

- **REPRODUCIBILITY**

Precise centrifugation is achieved using the "At set rpm" function.

Timer starts when the selected rotational speed is reached. Different runs can be easily reproduced.

- **FLEXIBILITY**

EZEE Quantum multifunction centrifuges simplify high throughput sample processing up to 31,998 x g. Choose from the extensive rotor portfolio (centrifuge model dependent) supporting multiple labware including PCR tubes, strips and plates, microcentrifuge tubes, conical, round and flat bottom centrifuge tubes & bottles, blood tubes, blood bags, Vacutainer tubes, microtitre and deep well plates.

Overcome the challenges of a shared laboratory setting with the productivity, safety, and reliability of an EEZEE Quantum Centrifuge.

- **CONVENIENCE**

EEZEE Quantum centrifuges enable users to edit and store up to 99 programs .

Save with a combination of speed, centrifugal force, temperature, run time, and acceleration/deceleration rates.

- **SAFETY**

Enhanced safety is provided with the glove friendly, splashproof touch screen, the electronic door lock with protection against imbalance, over speed and overheat. Multiple layers of protection ensure the safety of the machine and users.

QUANTUM series centrifuges



EZEE Quantum 30 Centrifuge



EZEE Quantum 30 Refrigerated Centrifuge



EZEE Quantum 40 Refrigerated Floor Standing Centrifuge

EZEE QUANTUM 3 CENTRIFUGE

Cat. No.	Description	Max. Speed (RPM)	Max. RCF (x g)
EZEEQUANT3	EZEE Quantum 3 Centrifuge		
Angle Rotors			
EQ3-ART50	Angle Rotor, 6 x 50ml Con./Round	6000	4338
EQ3-ART15	Angle Rotor, 12 x 10/15 ml Tube Ø 17 x 120 mm	6000	4226
EQ3-ART15/24	Angle Rotor, 24 x 10/15 ml Tube Ø 17 x 120 mm	4500	3053
EQ3-ADP7BT	Adapters for 7 ml blood tube, set of 12 pcs		
EQ3-ADP5BT	Adapters for 2-5 ml blood tube, set of 12 pcs		
Swing Out Rotors			
EQ3-SRT	Swing-out Rotor	4200	2622
EQ3-CAR10	Carrier, 16 x 10ml Vacutainer Tube. (set of 4)		
EQ3-CAR15	Carrier, 16 x 15ml Con.Tube (Set of 4)		
EQ3-CAR50	Carrier, 4 x 50ml Con. Tube (set of 4)		
EQ3-SRT-PCR	Swingout Rotor with Carrier for 4 x PCR Plate	4200	1637
EQ3-CCP	Cell Culture Package 1 includes:		
	1) Swing Out Rotor	4,500	3,010
	2) Carriers for 4 x 50 ml Conical		
	3) Carriers for 16 x 15 ml Conical/Round Bottom Tube		
EQ3-BTP	Blood Tube Package includes:		
	1) Swing Out Rotor	4,500	3,010
	2) Carriers for 16 x 10-15 ml Blood Tube (Ø 16 x 100-125 mm)		
	3) Adaptors for 16 x 7 ml Blood Tube (Ø 13 x 100 mm)		
	4) Adaptors for 16 x 2-5 ml Blood Tube (Ø 13 x 75 mm)		
EQ3-CCPBTP	Cell Culture + Blood Tube Package includes:		
	1) Swing Out Rotor	4,500	3,010
	2) Carriers for 4 x 50 ml Conical Tube		
	3) Carriers for 16 x 15 ml Conical Tube or 16 x 10-15 ml Blood Tube (Ø 16 x 100-125 mm)		
	4) Adaptors for 16 x 2-5 ml Blood Tube (Ø 13 x 75 mm)		
	5) Adaptors for 16 x 7 ml Blood Tube (Ø 13 x 100 mm)		
EQ3-CCP2	Cell Culture Package 2 includes:		
	1) Swing Out Rotor	4200	2622
	2) Carriers for 4 x 100 ml Tube		
EQ3-BTP2	Blood Tube Package 2 includes:		
	1) Swing Out Rotor	4200	2622
	2) Carriers for 24 x 10 ml Blood Tube (Ø 16 x 125 mm)		
	3) Adaptors for 16 x 2-5 ml Blood Tube (Ø 13 x 75 mm)		



EQ3-ART15



EZEE QUANTUM 8 AND 8R CENTRIFUGE

Cat. No.	Description	Max. Speed (RPM)	Max. RCF (x g)
EZEEQUANT8	EZEE Quantum 8 Centrifuge		
EZEEQUANT8R	EZEE Quantum 8 Refrigerated Centrifuge		
Angle Rotors			
EQ8-ART2.0/24	Angle Rotor, 24 x 1.5/2.0 ml	18000	31127
EQ8-ART2.0/32	Angle Rotor, 32 x 1.5/2.0 ml	14000	19987
EQ8-ART2.0/48	Angle Rotor, 48 x 1.5/2.0 ml	13000	18072
EZEE-A0.2	Adaptor, 0.2 ml PCR tube (24 pcs)		
EZEE-A0.5	Adaptor, 0.5 ml PCR tube (24 pcs)		
EQ8-ARTPCR	Angle Rotor, 8 x PCR Strip	14000	15030
EQ8-ART5	Angle Rotor, 12 x 5 ml	16000	17353
EQ8-ART10	Angle Rotor, 12 x 10 ml	13000	15234
EQ8-ADP25	Adapters for 5 ml (12 pcs)		
EQ8-ADP22	Adapters for 1.5/2 ml (12 pcs)		
EQ8-ART15	Angle Rotor, 12 x 15ml Con	11000	13736
EQ8-ADP310	Adapters for 10 ml (12 pcs)		
EQ8-ADP35	Adapters for 5 ml (12 pcs)		
EQ8-ADP32	Adapters for 1.5/2 ml (12 pcs)		
EQ8-ART50	Angle Rotor, 6 x 50 ml Con/Round (includes 15 ml Con adapters, 6 pcs)	12000	16241
EQ8-ADP415	Adapters for 15 ml Con (1pc)		
EQ8-ADP410	Adapters for 10 ml (1 pc)		
EQ8-ADP45	Adapters for 5 ml (1 pc)		
EQ8-ADP42	Adapters for 1.5/2 ml (1 pc)		
EQ8-ART100	Angle Rotor, 4 x 100ml	11000	13702
EQ8-ADP550	Adapters for 50 ml (1 pc)		
EQ8-ADP515	Adapters for 15 ml (1 pc)		
EQ8-ADP510	Adapters for 2 x 10 ml (1 pc)		
EQ8-ADP505	Adapters for 3 x 5 ml (1 pc)		
EQ8-ADP52	Adapters for 4 x 1.5/2 ml (1 pc)		
EQ8-DRT	Drum Rotor, 24 x 1.5/2.0ml	13000	16816
Swing Out Rotors			
EQ8-SRT	Swing-out Rotor	4200	2622
EQ8-CCP	Cell Culture Package 1 includes: 1) Swing Out Rotor, 4 x 100 ml 2) Carriers for 4 x 50 ml Conical 3) Carriers for 16 x 15 ml Conical/Round	4500	3,010
EQ8-CCP2	Cell Culture Package 2 includes: 1) Swing Out Rotor with carriers for 8 x 50 ml Conical/Round	4000	2680
EQ8-BTP	Blood Tube Package includes: 1) Swing Out Rotor, 4 x 100 ml 2) Carriers for 4 x 10/15 ml Blood Tube 3) Adapters for 5/7 ml Blood Tube	4500	3010
EQ8-CCPBTP	Cell Culture + Blood Tube Package includes: 1) Swing Out Rotor 2) Carriers for 4 x 50 ml Conical Tube 3) Carriers for 16 x 15 ml Conical Tube or 16 x 15 ml Blood Tube (Ø 16 x 125 mm) 4) Carriers for 16 x 10 ml Blood Tube (Ø 16 x 100 mm) 5) Adaptors for 16 x 2-5 ml Blood Tube (Ø 13 x 75 mm) 6) Adaptors for 16 x 7 ml Blood Tube (Ø 13 x 100 mm)	4500	3010
EQ8-CCP3	Cell Culture Package 3 includes: 1) Swing Out Rotor 2) Carriers for 4 x 100 ml Tube	4500	3010
EQ8-BTP1	Blood Tube Package 2 includes: 1) Swing Out Rotor 2) Carriers for 24 x 10 ml Blood Tube (Ø 16 x 125 mm) 3) Adaptors for 16 x 2-5 ml Blood Tube (Ø 13 x 75 mm)	4500	3010

EZEE QUANTUM 10 AND 10R CENTRIFUGE

Cat. No.	Description	Max. Speed (RPM)	Max. RCF (x g)
EZEEQUANT10	EZEE Quantum 10 Centrifuge		
EZEEQUANT10R	EZEE Quantum 10 Refrigerated Centrifuge		
Angle Rotors			
EQ10-ART2.0/16	Angle Rotor, 16 x 1.5/2.0ml	20000	30700
EQ8-ART2.0/24	Angle Rotor, 24 x 1.5/2.0ml	18000	31127
EQ8-ART2.0/32	Angle Rotor, 32 x 1.5/2.0ml	16000	26105
EQ8-ART2.0/48	Angle Rotor, 48 x 1.5/2.0ml	16000	27376
EZEE-A0.2	Adaptor, 0.2 ml PCR tube (24 pcs)		
EZEE-A0.5	Adaptor, 0.5 ml PCR tube (24 pcs)		
EQ8-ARTPCR	Angle Rotor, 8 x PCR Strip	14000	15030
EQ8-ART5	Angle Rotor, 12 x 5ml	16000	17353
EQ8-ART10	Angle Rotor, 12 x 10ml	16000	23077
EQ8-ADP25	Adapters for 5 ml (12 pcs)		
EQ8-ADP22	Adapters for 1.5/2 ml (12 pcs)		
EQ8-ART15	Angle Rotor, 12 x 15ml Con	12000	16347
EQ8-ADP310	Adapters for 10 ml (12 pcs)		
EQ8-ADP35	Adapters for 5 ml (12 pcs)		
EQ8-ADP32	Adapters for 1.5/2 ml (12 pcs)		
EQ10-ART15	Angle Rotor, 40 x 15ml Con	5500	5072
EQ8-ART50	Angle Rotor, 6 x 50ml Con/Round (includes 15ml Con adapters, 6 pcs)	12000	22106
EQ10-ART50	Angle Rotor, 8 x 50ml Con/Round	10000	9825
EQ8-ADP415	Adapters for 15 ml Con (1 pc)		
EQ8-ADP410	Adapters for 10 ml (1 pc)		
EQ8-ADP45	Adapters for 5 ml (1 pc)		
EQ8-ADP42	Adapters for 1.5/2 ml (1 pc)		
EQ8-ART100	Angle Rotor, 4 x 100ml	12000	16307
EQ10-ART100	Angle Rotor, 6 x 100ml	12000	17588
EQ8-ADP550	Adapters for 50 ml (1 pc)		
EQ8-ADP515	Adapters for 15 ml (1 pc)		
EQ8-ADP510	Adapters for 2 x 10 ml (1 pc)		
EQ8-ADP505	Adapters for 3 x 5 ml (1 pc)		
EQ8-ADP52	Adapters for 4 x 1.5/2 ml (1 pc)		
EQ10-DRT	Drum Rotor, 60 x 1.5/2.0ml	15000	22252
EQ8-SRT	Swing Out Rotor for 4 x PCR Plate	4200	1637
Swing Out Rotors			
EQ10-CCP	Cell Culture Package 1 includes: 1) Swing Out Rotor, 4 x 250 ml 2) Rectangular Buckets (4pcs) 3) Adapters for 16 x 50 ml Conical Tubes 4) Adapters for 40 x 15 ml Conical Tubes	4200	3353
EQ10-CCP1	Cell Culture Package 2 includes: 1) Swing Out Rotor, 4 x 250 ml 2) Round Buckets, 250ml (4pcs) 3) Adapters for 8 x 50 ml Conical Tubes 4) Adapters for 20 x 15 ml Conical Tubes	4200	3353
EQ10-CCP2	Cell Culture Package 3 includes: 1) Swing Out Rotor, 4 x 250 ml 2) Round Buckets, 250ml (4pcs) 3) Sealing Lids (4 pcs) 4) Adapters for 4 x 50 ml Conical Tubes 5) Adapters for 4 x 15 ml Conical Tubes	4200	3353
EQ3-CCP	Cell Culture Package 4 includes: 1) Swing Out Rotor, 4 x 100 ml 2) Carriers for 4 x 50 ml Conical 3) Carriers for 16 x 15 ml Conical/Round	5000	3716
EQ10-BTP	Blood Tube Package 1 includes: 1) Swing Out Rotor, 4 x 250 ml 2) Rectangular Buckets 3) Adapters for 48 x 10 ml Blood Tubes 4) Adapters for 72 x 2-7 ml Blood Tubes	4200	3353

EZEE QUANTUM 10 AND 10R CENTRIFUGE

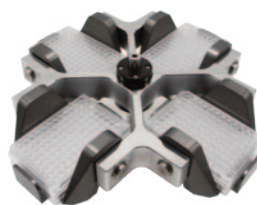
Cat. No.	Description	Max. Speed (RPM)	Max. RCF (x g)
EQ10-BTP1	Blood Tube Package 2 includes: 1) Swing Out Rotor, 4 x 250 ml 2) Round Buckets, 250ml (4pcs) 3) Adapters for 32 x 10ml Blood Tubes 4) Adapters for 36 x 2-7 ml Blood Tubes	4200	3353
EQ10-BTP2	Blood Tube Package 3 includes: 1) Swing Out Rotor, 4 x 250 ml 2) Round Buckets, 250ml (4pcs) 3) Sealing Lids (4 pcs) 4) Adapters for 32 x 10ml Blood Tubes 5) Adapters for 36 x 2-7 ml Blood Tubes	4200	3353
EQ10-BTP3	Blood Tube Package 4 includes: 1) Swing Out Rotor, 4 x 100 ml 2) Carriers for 4 x 10/15 ml Blood Tube 3) Adapters for 5/7 ml Blood Tube	5000	3716
EQ10-SRT	Swing-out Rotor with 4 x 250ml Round Bucket	4200	2622
EQ10-ADP	Adapter, 1 x 100ml (set of 4)		
EQ10-ADP1	Adapter, 2 x 50ml Con. (set of 4)		
EQ10-ADP2	Adapter, 5 x 15ml Con. (set of 4)		
EQ10-ADP3	Adapter, 9 x 10ml Round (set of 4)		
EQ10-ADP4	Adapter, 9 x 5ml Blood Collection Tube (set of 4)		
EQ10-ADP5	Adapter, 8 x 5ml Microtube (set of 4)		
EQ10-ADP6	Adapter, 8 x 2ml Microtube (set of 4)		



EQ8-ART2.0/48



EQ8-ART100



EQ10-SRT



EQ8-ART50



EZEE QUANTUM 30 AND 30R CENTRIFUGE

Cat. No.	Description	Max. Speed (RPM)	Max. RCF (x g)
EZEEQUANT30	EZEE Quantum 30 Centrifuge		
EZEEQUANT30R	EZEE Quantum 30 Refrigerated Centrifuge		
Angle Rotors			
EQ30-ART2.0/12	Angle Rotor, 12 x 1.5/2.0ml	21000	31988
EQ8-ART2.0/24	Angle Rotor, 24 x 1.5/2.0ml	16000	24594
EQ8-ART2.0/48	Angle Rotor, 48 x 1.5/2.0ml	15000	24061
EZEE-A0.2	Adaptor, 0.2 ml PCR tube (24 pcs)		
EZEE-A0.5	Adaptor, 0.5 ml PCR tube (24 pcs)		
EQ8-ARTPCR	Angle Rotor, 8 x PCR Strip	14000	15030
EQ8-ART5	Angle Rotor, 12 x 5ml	18000	21962
EQ8-ART10	Angle Rotor, 12 x 10ml	15000	20282
EQ8-ADP25	Adapters for 5 ml (12 pcs)		
EQ8-ADP22	Adapters for 1.5/2 ml (12 pcs)		
EQ8-ART15	Angle Rotor, 12 x 15ml Con	13000	19185
EQ8-ADP310	Adapters for 10 ml (12 pcs)		
EQ8-ADP35	Adapters for 5 ml (12 pcs)		
EQ8-ADP32	Adapters for 1.5/2 ml (12 pcs)		
EQ10-ART15	Angle Rotor, 40 x 15ml Con	5500	5072
EQ8-ART50	Angle Rotor, 6 x 50ml Con/Round (includes 15ml Con adapters, 6 pcs)	13000	19060
EQ10-ART50	Angle Rotor, 8 x 50ml Con/Round	11000	11888
EQ8-ADP415	Adapters for 15 ml Con (1pc)		
EQ8-ADP410	Adapters for 10 ml (1 pc)		
EQ8-ADP45	Adapters for 5 ml (1 pc)		
EQ8-ADP42	Adapters for 1.5/2 ml (1 pc)		
EQ8-ART100	Angle Rotor, 4 x 100ml	12000	16307
EQ8-ADP550	Adapters for 50 ml (1 pc)		
EQ8-ADP515	Adapters for 15 ml (1 pc)		
EQ8-ADP510	Adapters for 2 x 10 ml (1 pc)		
EQ8-ADP505	Adapters for 3 x 5 ml (1 pc)		
Swing Out Rotors			
EQ30-SRT	Swing Out Rotor, 4 x 500ml + Round Buckets	4200	3510
EQ30-ADP	Adapter, 250 ml Flat Bottom (set of 4)		
EQ30-ADP1	Adapter, 2 x 100 ml Round Bottom (set of 4)		
EQ30-ADP2	Adapter, 4 x 50 ml Conical Bottom (set of 4)		
EQ30-ADP3	Adapter, 4 x 50 ml Flat Bottom (set of 4)		
EQ30-ADP4	Adapter, 4 x 50 ml Round Bottom (set of 4)		
EQ30-ADP5	Adapter, 9 x 15 ml Conical Bottom (set of 4)		
EQ30-ADP6	Adapter, 9 x 10 ml (set of 4)		
EQ30-ADP7	Adapter, 14 x 10 ml Blood Tube (set of 4)		
EQ30-ADP8	Adapter, 19 x 2-7 ml Blood Tube (set of 4)		
EQ30-ADP9	Adapter, 17 x 1.5/2 ml (set of 4)		
EQ30-SRT1	Swing Out Rotor, 4 x 500ml + Round Buckets + Lids	4200	3510
EQ30-ADP10	Adapter, 250 ml Flat Bottom (set of 4)		
EQ30-ADP11	Adapter, 1 x 100 ml Round Bottom (set of 4)		
EQ30-ADP12	Adapter, 3 x 50 ml Conical Bottom (set of 4)		
EQ30-ADP13	Adapter, 3 x 50 ml Flat Bottom (set of 4)		
EQ30-ADP14	Adapter, 3 x 50 ml Round Bottom (set of 4)		
EQ30-ADP15	Adapter, 9 x 15 ml Conical Bottom (set of 4)		
EQ30-ADP16	Adapter, 9 x 10 ml (set of 4)		
EQ30-ADP17	Adapter, 13 x 10 ml Blood Tube (set of 4)		
EQ30-ADP18	Adapter, 17 x 2-7 ml Blood Tube (set of 4)		
EQ30-ADP19	Adapter, 17 x 1.5/2 ml (set of 4)		
EQ30-SRT2	Swing Out Rotor, 4 x 500ml + Rectangular Buckets	4200	3510
EQ30-ADP20	Adapter, 500 ml Flat Bottom (set of 4)		
EQ30-ADP21	Adapter, 250 ml Flat Bottom (set of 4)		
EQ30-ADP22	Adapter, 2 x 100 ml Round Bottom (set of 4)		
EQ30-ADP23	Adapter, 4 x 50 ml Conical Bottom (set of 4)		
EQ30-ADP24	Adapter, 4 x 50 ml Flat Bottom (set of 4)		
EQ30-ADP25	Adapter, 4 x 50 ml Round Bottom (set of 4)		
EQ30-ADP26	Adapter, 9 x 15 ml Conical Bottom (set of 4)		
EQ30-ADP27	Adapter, 9 x 15 ml Round Bottom (set of 4)		
EQ30-ADP28	Adapter, 16 x 10 ml Blood Tube (set of 4)		
EQ30-ADP29	Adapter, 29 x 2-7 ml Blood Tube (set of 4)		
EQ30-ADP291	Adapter, 17 x 1.5/2 ml (set of 4)		

EZEE QUANTUM 30 AND 30R CENTRIFUGE

Cat. No.	Description	Max. Speed (RPM)	Max. RCF (x g)
EQ30-SRT3	Swing Out Rotor, 4 x 750ml + Round Buckets	4500	4335
EQ30-SRT3L	Swing Out Rotor, 4 x 750ml + Round Buckets + Lids	4500	4335
EQ30-ADP30	Adapter, 500 ml Corning Conical Tube (set of 4)		
EQ30-ADP31	Adapter, 500 ml Flat Bottom (set of 4)		
EQ30-ADP32	Adapter, 250 ml Corning Conical Tube (set of 4)		
EQ30-ADP33	Adapter, 250 ml Flat Bottom (set of 4)		
EQ30-ADP34	Adapter, 4 x 100 ml Round Bottom (set of 4)		
EQ30-ADP35	Adapter, 7 x 50 ml Conical Bottom (set of 4)		
EQ30-ADP36	Adapter, 7 x 50 ml Flat Bottom (set of 4)		
EQ30-ADP37	Adapter, 7 x 50 ml Round Bottom (set of 4)		
EQ30-ADP38	Adapter, 14 x 15 ml Conical Bottom (set of 4)		
EQ30-ADP39	Adapter, 14 x 15 ml Round Bottom (set of 4)		
EQ30-ADP391	Adapter, 21 x 10 ml Blood Tube (set of 4)		
EQ30-ADP392	Adapter, 30 x 2-7 ml Blood Tube (set of 4)		
EQ30-ADP393	Adapter, 30 x 1.5/2 ml (set of 4)		
EQ30-ADP394	Adapter for 250/300 ml Blood Bag (set of 4)		
EQ30-CAR	Carrier for MTP/DWP (set of 4 pcs)		
EQ30-SRT3LID	Bucket Sealing Lids (set of 4 pcs)		
EQ30-SRT4	Swing Out Rotor, 4 x 750ml + Rectangular Buckets	4200	3777
EQ30-ADP40	Adapter, 750 ml Flat Bottom (set of 4)		
EQ30-ADP41	Adapter, 500 ml Corning Conical Tube (set of 4)		
EQ30-ADP42	Adapter, 500 ml Flat Bottom (set of 4)		
EQ30-ADP43	Adapter, 250 ml Corning Conical Tube (set of 4)		
EQ30-ADP44	Adapter, 250 ml Flat Bottom (set of 4)		
EQ30-ADP45	Adapter, 4 x 100 ml Round Bottom (set of 4)		
EQ30-ADP46	Adapter, 7 x 50 ml Conical Bottom (set of 4)		
EQ30-ADP47	Adapter, 7 x 50 ml Flat Bottom (set of 4)		
EQ30-ADP48	Adapter, 7 x 50 ml Round Bottom (set of 4)		
EQ30-ADP49	Adapter, 17 x 15 ml Conical/Round Bottom (set of 4)		
EQ30-ADP491	Adapter, 17 x 10 ml Conical/Round Bottom (set of 4)		
EQ30-ADP492	Adapter, 28 x 10 ml Blood Tube (set of 4)		
EQ30-ADP493	Adapter, 34 x 2-7 ml Blood Tube (set of 4)		
EQ30-ADP494	Adapter, 30 x 1.5/2 ml (set of 4)		
EQ30-ADP495	Adapter for 450/500 ml Blood Bag (set of 4)		
EQ30-CAR	Carrier for MTP/DWP (set of 4 pcs)		
EQ30-CCP	Cell Culture Package 1:		
	1) Swing Out Rotor with buckets, 4 x 500ml	4200	3777
	2) Adapters, 50 mL Conical Tube, 4 x 50ml (set of 4)		
	3) Adapters, 15 mL Conical Tube, 9 x 15ml (set of 4)		
EQ30-CCP1	Cell Culture Package 2:		
	1) Swing Out Rotor 4 x 750ml	4200	3046
	2) Carrier for MTP/DWP		
EQ30-CCP2	Cell Culture Package 3:		
	1) Swing Out Rotor with round buckets, 4 x 750ml	4500	4335
	2) Adapter, 7 x 50 ml conical tube (set of 4). 28 tubes per run		
	3) Adapter, 14 x 15 ml conical tube (set of 4). 56 tubes per run		
EQ30-CCP3	Cell Culture Package 4:		
	1) Swing Out Rotor with round buckets, 4 x 750ml	4500	4335
	2) Adapter, 7 x 50 ml conical tube (set of 4). 28 tubes per run		
	3) Adapter, 14 x 15 ml conical tube (set of 4). 56 tubes per run		
	4) Sealing lids, set of 4 pcs		
EQ30-CCP4	Cell Culture Package 5:		
	1) AUTO LOCK Swing Out Rotor with round buckets, 4 x 750ml	4500	4335
	2) Adapter, 7 x 50 ml conical tube (set of 4). 28 tubes per run		
	3) Adapter, 14 x 15 ml conical tube (set of 4). 56 tubes per run		
EQ30-CCP5	Cell Culture Package 6:		
	1) AUTO LOCK Swing Out Rotor with round buckets, 4 x 750ml	4500	4335
	2) Adapter, 7 x 50 ml conical tube (set of 4). 28 tubes per run		
	3) Adapter, 14 x 15 ml conical tube (set of 4). 56 tubes per run		
	4) Sealing lids, set of 4 pcs		



Unit 41, Somers Road Industrial Estate, Rugby, CV22 7DH

T_+44 (0)1788 565300 • E_enquiries@thistlescientific.co.uk • W_thistlescientific.co.uk

EZEE QUANTUM 30 AND 30R CENTRIFUGE

Cat. No.	Description	Max. Speed (RPM)	Max. RCF (x g)
EQ30-CCP6	Cell Culture Package 7: 1) Swing Out Rotor with buckets, 4 x 500ml 2) Adapter, 4 x 50 ml conical tube (set of 4). 16 tubes per run 3) Adapter, 9 x 15 ml conical tube (set of 4). 36 tubes per run	4200	3510
EQ30-CCP7	Cell Culture Package 8: 1) Swing out rotor with buckets, 4 x 500ml 2) Adapter, 3 x 50 ml conical tube (set of 4). 12 tubes per run 3) Adapter, 9 x 15 ml conical tube (set of 4). 36 tubes per run 4) Sealing lids, set of 4 pcs	4200	3510
EQ30-CCP8	Cell Culture Package 9: 1) Swing Out Rotor 4 x 750ml 2) Carrier for MTP/DWP	4500	4335
EQ30-CCP9	Cell Culture Package 9: 1) Swing Out Rotor 2 Position 2) Carrier for MTP/DWP	6500	5498
EQ30-BTP	Blood Tube Package 1: 1) Swing Out Rotor with rectangular buckets, 4 x 750ml 2) Adapter, 34 x 2-7 ml blood tube (set of 4). 136 tubes per run 3) Adapter, 28 x 10 ml blood tube (set of 4). 112 tubes per run	4200	3777
EQ30-BTP1	Blood Tube Package 2: 1) AUTO LOCK Swing out rotor with rectangular buckets, 4 x 750ml 2) Adapter, 34 x 2-7 ml blood tube (set of 4). 136 tubes per run 3) Adapter, 28 x 10 ml blood tube (set of 4). 112 tubes per run	4200	3777
EQ30-BTP2	Blood Tube Package 3: 1) Swing Out Rotor with round buckets, 4 x 750ml 2) Adapter, 30 x 2-7 ml blood tube, 120 tubes per run (set of 4) 3) Adapter, 21 x 10 ml blood tube, 84 tubes per run (set of 4)	4500	4335
EQ30-BTP3	Blood Tube Package 4: 1) Swing Out Rotor with round buckets, 4 x 750ml 2) Adapter, 30 x 2-7 ml blood tube, 120 tubes per run (set of 4) 3) Adapter, 21 x 10 ml blood tube, 84 tubes per run (set of 4) 4) Sealing lids, set of 4 pcs	4500	4335
EQ30-BTP4	Blood Tube Package 5: 1) AUTO LOCK Swing Out Rotor with round buckets, 4 x 750ml 2) Adapter, 30 x 2-7 ml blood tube, 120 tubes per run (set of 4) 3) Adapter, 21 x 10 ml blood tube, 84 tubes per run (set of 4)	4500	4335
EQ30-BTP5	Blood Tube Package 6: 1) AUTO LOCK Swing Out Rotor with round buckets, 4 x 750ml 2) Adapter, 30 x 2-7 ml blood tube, 120 tubes per run (set of 4) 3) Adapter, 21 x 10 ml blood tube, 84 tubes per run (set of 4) 4) Sealing lids, set of 4 pcs 4) Sealing lids, set of 4 pcs	4500	4335
EQ30-BTP6	Blood Package 7: 1) Swing out rotor with buckets, 4 x 500ml 2) Adapter, 19 x 2-7 ml blood tube, 76 tubes per run (set of 4) 3) Adapter, 14 x 10 ml blood tube, 56 tubes per run (set of 4)	4200	3510
EQ30-BTP7	Blood Package 8: 1) AUTO LOCK Swing out rotor with buckets, 4 x 500ml 2) Adapter, 17 x 2-7 ml blood tube, 68 tubes per run (set of 4) 3) Adapter, 13 x 10 ml blood tube, 52 tubes per run (set of 4) 4) Sealing lids, set of 4 pcs	4200	3510
EQ30-BTP8	Blood Bag Package 9: 1) Swing Out Rotor, 4 x 750 ml 2) Rectangular Buckets (4pcs) 3) Inserts for 500 ml Blood Bags (4pcs)	4500	4335



EQ30-SRT2 with EQ30-ADP23 adaptors



EQ30-SRT3L with EQ30-ADP35 & EQ30-ADP38 adaptors



EQ30-ART2.0/12



EQ30-SRT4

EZEE QUANTUM 40R AND 40FR CENTRIFUGE

Cat. No.	Description	Max. Speed (RPM)	Max. RCF (x g)
EZEEQUANT40R	EZEE Quantum 40 Refrigerated Centrifuge		
EZEEQUANT40FR	EZEE Quantum 40 Refrigerated Floor Standing Centrifuge		
Angle Rotors			
EQ40-ART2.0/48	Angle Rotor, 48 x 1.5/2.0 ml (Dual Row)	16000	27376
EQ40-ART2.0/30	Angle Rotor, 30 x 1.5/2.0 ml	15500	27110
EZEE-A0.2	Adaptor, 0.2 ml PCR tube (24 pcs)		
EZEE-A0.5	Adaptor, 0.5 ml PCR tube (24 pcs)		
EQ40-ART5	Angle Rotor, 18 x 5 ml	15000	22043
EQ40-ART50/8	Angle Rotor, 8 x 50 ml Con/Round (includes 15ml Con adapters, 8 pcs)	12000	16241
EQ40-ART50/12	Angle Rotor, 12 x 50 ml Con/Round (includes 15ml Con adapters, 12 pcs)	10000	15964
EQ8-ADP415	Adapters for 15 ml Con (1 pc)		
EQ8-ADP410	Adapters for 10 ml (1 pc)		
EQ8-ADP45	Adapters for 5 ml (1 pc)		
EQ8-ADP42	Adapters for 1.5/2 ml (1 pc)		
EQ40-ART100	Angle Rotor, 6 x 100 ml	11000	14779
EQ8-ADP550	Adapters for 50 ml (1 pc)		
EQ8-ADP315	Adapters for 15 ml (1 pc)		
EQ8-ADP510	Adapters for 2 x 10 ml (1 pc)		
EQ40-ADP35	Adapters for 3 x 5 ml (1 pc)		
EQ8-ADP52	Adapters for 4 x 1.5/2 ml (1 pc)		
EQ40-ART250	Angle Rotor, 6 x 250 ml	10000	15132
EQ40-ADP4100	Adapters for 100 ml (6 pcs)		
EQ40-ADP450	Adapters for 50 ml (6 pcs)		
EQ40-ADP415	Adapters for 15 ml (6 pcs)		
EQ40-ADP4100	Adapters for 2 x 10 ml (6 pcs)		
EQ40-ADP45	Adapters for 3 x 5 ml (6 pcs)		
EQ40-ADP42	Adapters for 4 x 1.5/2 ml (6 pcs)		
Swing Out Rotors			
EQ40-SRT	Swing-out Rotor with 4 x 1000ml buckets	4200	3938
EQ40-SRTL	Swing Out Rotor with 4 x 1000ml buckets + Lids	4200	3938
EQ40-SRTLIDS	Bucket Sealing Lids (set of 4 pcs)		
EQ40-ADP550	Adapter for 50ml Conical (set of 4) - 40 tubes per run		
EQ40-ADP515	Adapter for 15ml Conical (set of 4) - 96 tubes per run		
EQ40-ADP5750	Adapter for 4 x 750ml Flat Bottom		
EQ40-ADP5500F	Adapter for 4 x 500ml Flat Bottom		
EQ40-ADP5500C	Adapter for 4 x 500ml Conical, Corning Style		
EQ40-ADP5250C	Adapter for 4 x 250ml Conical, Corning Style		
EQ40-ADP5250F	Adapter for 8 x 250ml Flat Bottom, Nalgene Style		
EQ40-ADP510	Adapter for 140 x 10 ml Blood Tube		
EQ40-ADP5750	Adapter for 196 x 2-7 ml Blood Tube		
EQ40-ADP5BB	Adapter for 450/500 ml Blood Bags (4 pcs)		
EQ40-CAR	Carrier for Deep Well Plate/MTP (set of 4)		



EQ40-ART2.0/30



EQ40-ART50/8



EQ40-ART50/12



EQ40-ART250



EZEE Quantum 40 Refrigerated Floor Standing Centrifuge



Unit 41, Somers Road Industrial Estate, Rugby, CV22 7DH

T_+44 (0)1788 565300 • E_enquiries@thistlescientific.co.uk • W_thistlescientific.co.uk

EZEE QUANTUM SERIES CENTRIFUGES



EZEE Quantum 30 Centrifuge



EZEE Quantum 30 Refrigerated Centrifuge



EZEE Quantum 40 Refrigerated Floor Standing Centrifuge



TECHNICAL SPECIFICATIONS

Cat. No.	EZEEQUANT3	EZEEQUANT8	EZEEQUANT8R	EZEEQUANT10	EZEEQUANT10R
MAX. SPEED	6,000 RPM	18,000 RPM	18,000 RPM	20,500 RPM	20,500 RPM
RPM ACCURACY	±10 RPM	±10 RPM	±10 RPM	±10 RPM	±10 RPM
MAX. RCF	4,338 x G	31,127 x G	31,127 x G	32,254 x G	32,254 x G
MAX. CAPACITY	4 x 100 ML	4 x 100 ML	4 x 100 ML	4 x 250 ML	4 x 250 ML
SET TIME RANGE	1 s TO 99 H 59 MIN 59 s	1 s TO 99 H 59 MIN 59 s	1 s TO 99 H 59 MIN 59 s	1 s TO 99 H 59 MIN 59 s	1 s TO 99 H 59 MIN 59 s
TEMPERATURE RANGE	NA	NA	-20 °C TO 40 °C	NA	-20 °C TO 40 °C
TEMPERATURE ACCURACY	NA	NA	±1.0 °C	NA	±1.0 °C
PROGRAM STORAGE	NA	UP TO 99	UP TO 99	99	99
RUN RECORD STORAGE	NA	UP TO 99	UP TO 99	99	99
ACCELERATION PROFILES	NA	15 ADJUSTABLE RATES	15 ADJUSTABLE RATES		
DECELERATION PROFILES	NA	15 ADJUSTABLE RATES + ZERO BRAKE	15 ADJUSTABLE RATES + ZERO BRAKE		
DIMENSION	500 x 320 x 360 MM	500 x 400 x 340 MM	610 x 560 x 360 MM	520 x 430 x 390 MM	700 x 620 x 400 MM
WEIGHT	28 KG	44 KG	75 KG	47 KG	102 KG
POWER SUPPLY	AC 200-240 V, 50 Hz	AC 200-240 V, 50 Hz	AC 200-240 V, 50 Hz	AC 200-240 V, 50 Hz	AC 200-240 V, 50 Hz
POWER	500 W	550 W	1000 W	750 W	1100 W
SOUND LEVEL	≤ 60 DBA	≤ 60 DBA	≤ 55 DBA	≤ 60 DBA	≤ 55 DBA

TECHNICAL SPECIFICATIONS

Cat. No.	EZEEQUANT30	EZEEQUANT30R	EZEEQUANT40R	EZEEQUANT40FR
MAX. SPEED	21,000 RPM	21,000 RPM	16,000 RPM	16,000 RPM
RPM ACCURACY	±10 RPM	±10 RPM	±10 RPM	±10 RPM
MAX. RCF	31,988 x G	31,988 x G	27,376 x G	27,376 x G
MAX. CAPACITY	4 x 750 ML	4 x 750 ML	4 x 1000 ML	4 x 1000 ML
SET TIME RANGE	1 s TO 99 H 59 MIN 59 s	1 s TO 99 H 59 MIN 59 s	1 s TO 99 H 59 MIN 59 s	1 s TO 99 H 59 MIN 59 s
TEMPERATURE RANGE	NA	-20 °C TO 40 °C	-20 °C TO 40 °C	-20 °C TO 40 °C
TEMPERATURE ACCURACY	NA	±1.0 °C	±1.0 °C	±1.0 °C
PROGRAM STORAGE	99	99	99	99
RUN RECORD STORAGE	99	99	99	99
DIMENSION	560 x 460 x 390 MM	670 x 700 x 450 MM	770 x 680 x 470 MM	580 x 720 x 820 MM
WEIGHT	57.5 KG	105 KG	145 KG	155 KG
POWER SUPPLY	AC 200-240 V, 50 Hz	AC 200-240 V, 50 Hz	AC 200-240 V, 50 Hz	AC 200-240 V, 50 Hz
POWER	1200 W	1800 W	2300 W	2300 W
SOUND LEVEL	≤ 65 DBA	≤ 62 DBA	≤ 65 DBA	≤ 65 DBA



WolfLabs

Pricing on any accessories shown can be found by keying the part number into the search box on our website.

The specifications listed in this brochure are subject to change by the manufacturer and therefore cannot be guaranteed to be correct. If there are aspects of the specification that must be guaranteed, please provide these to our sales team so that details can be confirmed.

www.wolflabs.co.uk

Tel : 01759 301142

Fax : 01759 301143

sales@wolflabs.co.uk

Please contact us if this literature doesn't answer all your questions.